



General overhaul of the A1 between Mehring and the three-way intersection at Moseltal

Data and facts

Company	ÖBA Betondecken Ausbau Deutschland GmbH
Type	Concrete slab construction
Runtime	05.2017 - 12.2017
Principal	Landesbetrieb Mobilität Rheinland Pfalz

[Project report online](#)

All services performed by ÖBA.

The company's own mobile concrete mixer, with a mixing capacity of 200m³/h, produced 12,000m³ of sub-surface concrete and 3,500m³ of road surface concrete. All services were performed by ÖBA using its own employees and equipment: from producing the concrete, to installing the concrete slab and producing the exposed aggregate concrete surface, to fabricating the monolithic curbstones and joints.

Impressions

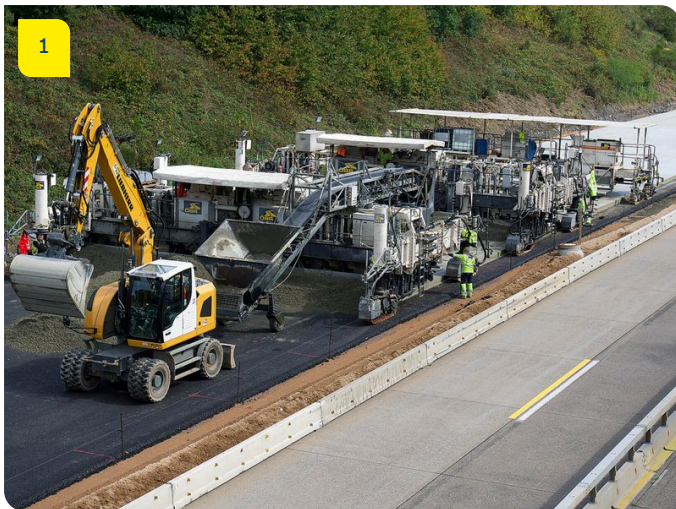


Image notes

1

Powerful equipment for strong results.

ÖBA's SP1500 paver unit and secondary processing vehicle create a flawless concrete slab on the A1 motorway between Mehring and the three-way intersection at Moseltal.

2

Completing the first steps for a motorway service station.

ÖBA's SP1500 paver unit is also used at the Mehring motorway rest area.

3

A horizontal monolith.

Slipforming monolithic curbstones with integral gutters is one of ÖBA's core competencies.

Do you have questions about the project or would you like to learn more? Feel free to contact us for further information.

PORR AG Group Communications

Absberggasse 47

1100 Wien

T +43 50 626-0

E-Mail: comms@porr-group.com