



Repair of A1 Steinhäusl- St. Christophen

Data and facts

Company ÖBA - Österreichische Betondecken Ausbau GmbH

Type Joint, repair and surface technology

Principal ASFINAG Bau Management GmbH

[Project report online](#)

www.porr-group.com



High performance at night.

Over the course of the repair work, 500 m³ of road surface concrete was used in exchanging the concrete panels and 7,500 kg of quick hardening restoration mortar were used, while joints with a total length of 10,000 running metres were restored. For quick project processing, rapid hardening concrete was used in the works.

The high time pressure during the night closures and the large transportation stretch for the special concrete constituted particular challenges in this project. There was also the customer's request to work on two construction stages simultaneously. This allowed the construction time to be decreased by one third.

Impressions

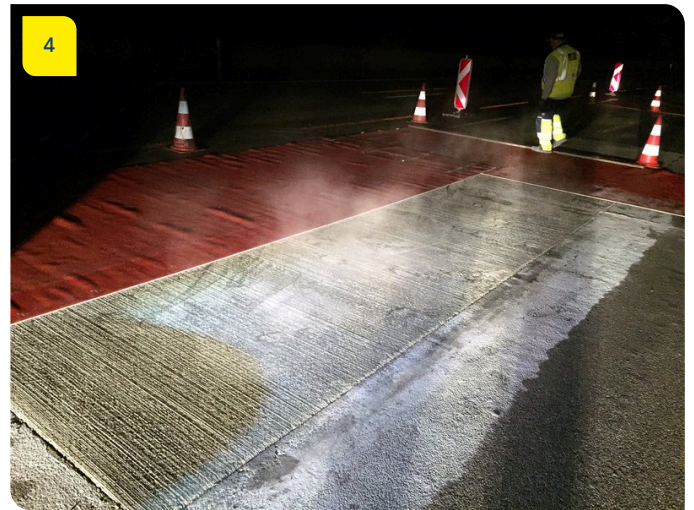
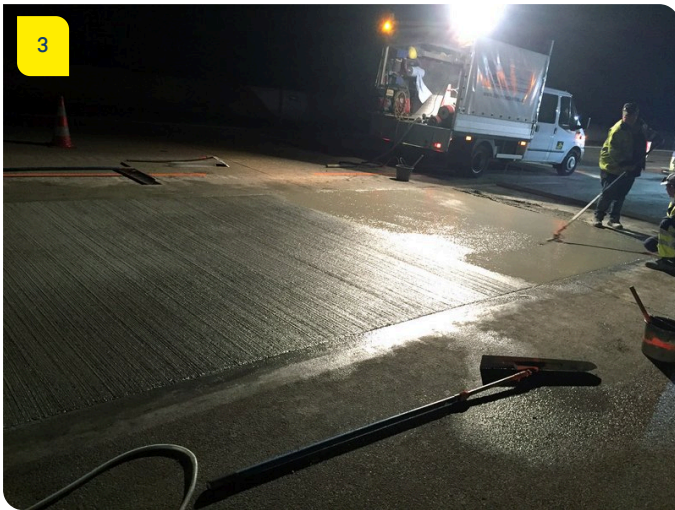


Image notes

1 Precise and efficient.
With the help of a striker roller, rapid hardening concrete was installed efficiently and precisely.

2 Lasting stability.
Dowels and anchors ensure lasting stability for the newly created concrete panel.

3

Precision work.

Shortly before hardening, the fresh concrete surface receives a brushed finish.

5

Well prepared.

Finished preparation works of the concrete panels to be renovated.

4

Supporting the hardening.

The renewed concrete panels are covered with a special thermal film to speed up the hardening of the material.

Do you have questions about the project or would you like to learn more? Feel free to contact us for further information.

PORR AG Group Communications

Absberggasse 47

1100 Wien

T +43 50 626-0

E-Mail: comms@porr-group.com